

# The Johnston



\* Elevation is for illustration purposes only

**Combining form and function within a clever ergonomic three bedroom, one bathroom design, The Johnston is both practical and stylish, with a real family-home feel.**

Bedrooms:	3
Bathrooms:	1
WC:	1
Area:	88.56m <sup>2</sup> (including Porch)
Overall Dimensions:	12.30m Wide x 7.20m Deep
Elevations:	3 options (traditional elevation depicted)

## Why Choose Modular WA?

At Modular WA, you'll find more than just exceptional modular homes. You'll learn that we offer is more than high specification fixtures, fittings and finishes as standard. Here, you'll find fresh ideas. You'll meet a team that will inspire and guide you. And you'll discover the value of integrity - from the concrete pad beneath every Modular WA home, to the proven systems and processes that enable us to deliver the home you want, anywhere in WA, faster.



### visit us

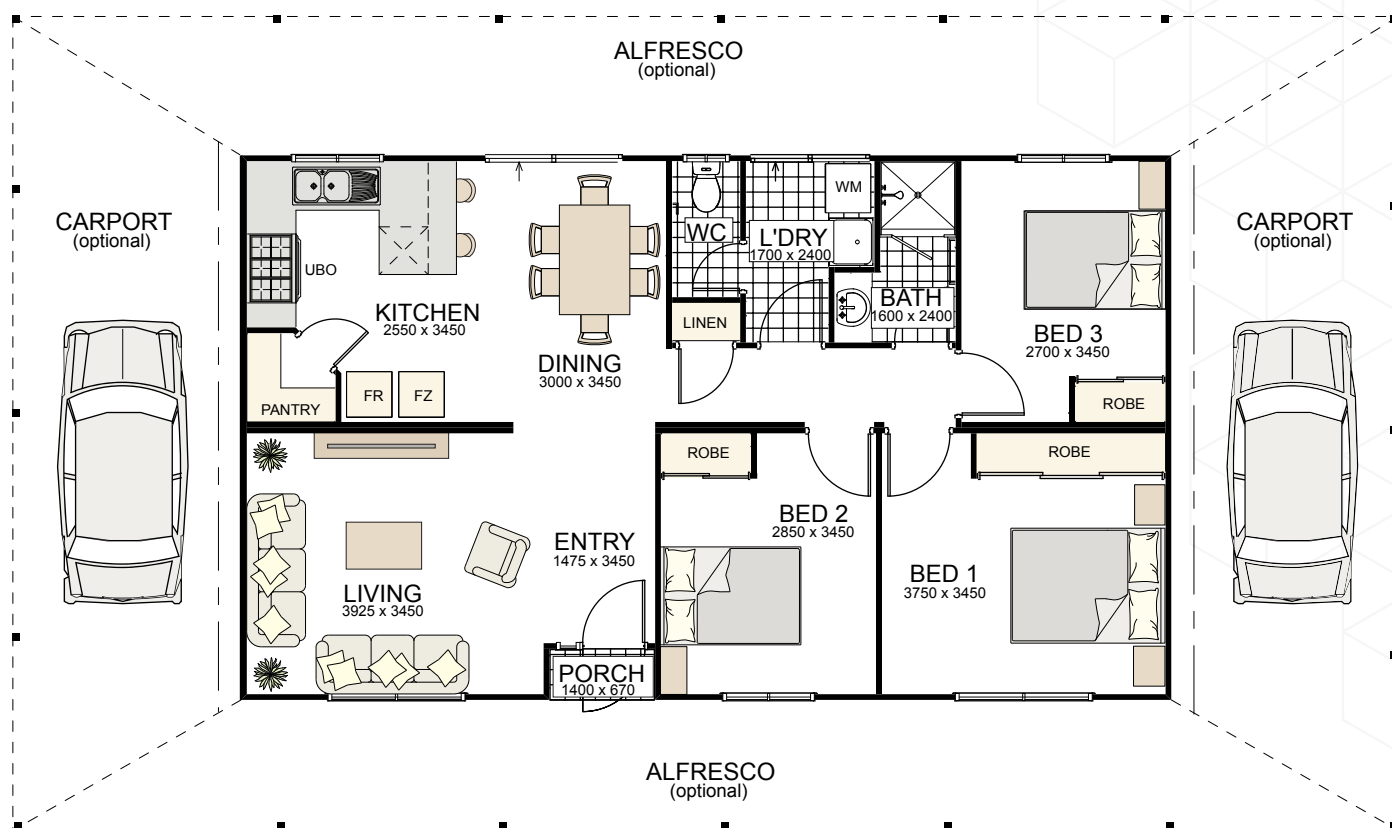
31 Challenge Boulevard  
Wangara WA 6065

### contact us

(08) 6454 0919  
sales@modularwa.com.au  
modularwa.com.au

# The Johnston

Overall Dimensions:  
12.30m Wide x 7.20 Deep



visit us

31 Challenge Boulevard  
Wangara WA 6065

contact us

(08) 6454 0919  
sales@modularwa.com.au  
modularwa.com.au