

The Elvire



* Elevation is for illustration purposes only

Ideal for narrow building sites, The Elvire is a 4 bedroom, 2 bathroom home that boasts all the space a modern family needs, whether you're entertaining or need a little me-time.

| | |
|---------------------|--|
| Bedrooms: | 4 |
| Bathrooms: | 2 |
| WC: | 2 |
| Area: | 120.96m ² (including porch) |
| Overall Dimensions: | 8.40m Wide x 14.40m Deep |
| Elevations: | 3 options (traditional elevation depicted) |

Why Choose Modular WA?

At Modular WA, you'll find more than just exceptional modular homes. You'll learn that we offer is more than high specification fixtures, fittings and finishes as standard. Here, you'll find fresh ideas. You'll meet a team that will inspire and guide you. And you'll discover the value of integrity - from the concrete pad beneath every Modular WA home, to the proven systems and processes that enable us to deliver the home you want, anywhere in WA, faster.



visit us

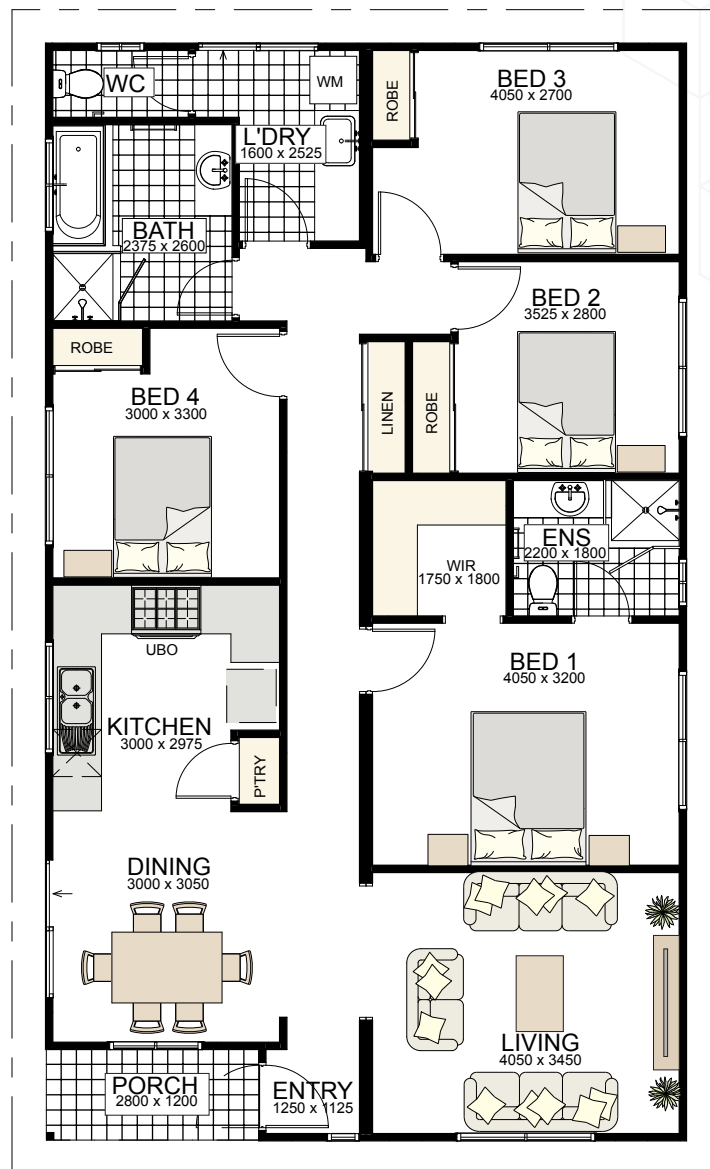
31 Challenge Boulevard
Wangara WA 6065

contact us

(08) 6454 0919
sales@modularwa.com.au
modularwa.com.au

The Elvire

Overall Dimensions:
8.40m Wide x 14x40m Deep



visit us

31 Challenge Boulevard
Wangara WA 6065

contact us

(08) 6454 0919
sales@modularwa.com.au
modularwa.com.au