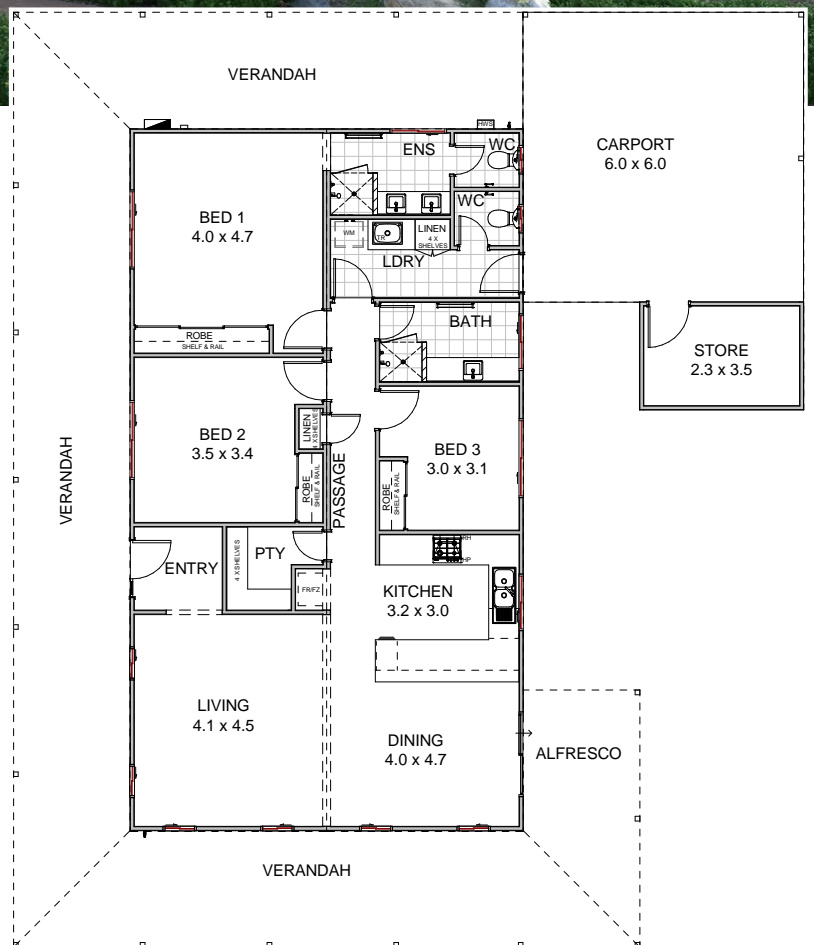




- > 215m<sup>2</sup> of total living, including carport, porch, verandah store and alfresco
- > Living area, tiled & bedrooms, carpeted
- > Roof and external walls fully insulated
- > Stainless steel electric oven, cook top & range hood
- > Energy efficient hot water system
- > Solid core front & laundry doors with Gainsborough entry lock set including deadlocks
- > Jason Windows & sliding doors with keylocks & flyscreens
- > 2,425mm ceilings with classic cornices
- > Native landscaping to front
- > Open wire-and-post rural-style fencing
- > Industry best 10-year structural guarantee



## Northam Eco Lifestyle Village

**P** 0447 257 337 | **E** admin@hhde.com.au | **W** ecolifestylevillages.com.au