



Capability Statement

modularwa.com.au



We're for real

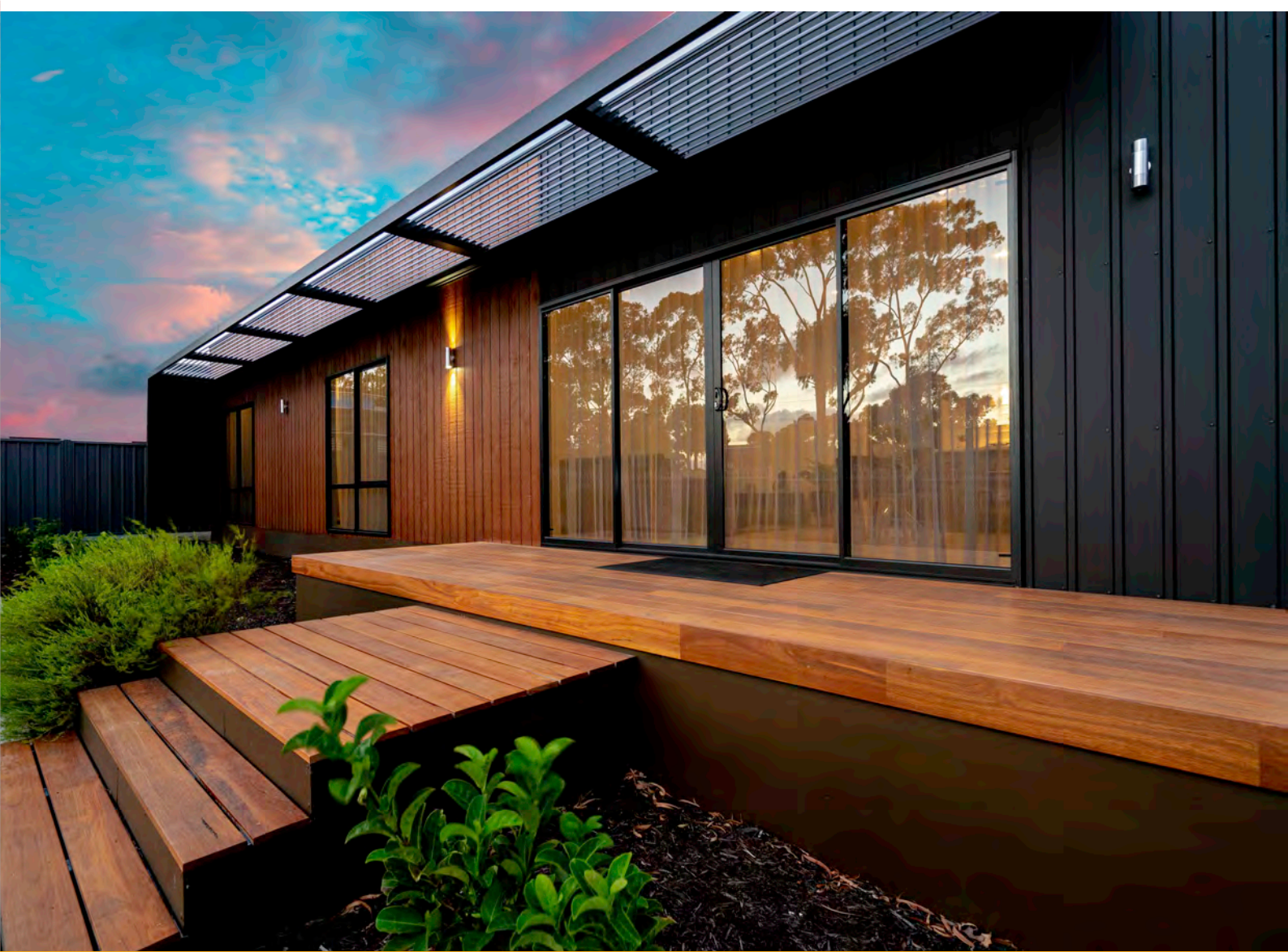
Our name may be new, but the people behind it are brimming with experience. Led by Wayne McGrath and backed by the financial strength of the Wyllie Group, we have assembled a team that has worked together for many years and contributed to some of WA's best known and innovative commercial modular projects. These include buildings for land estates, remote accommodation, offices, classrooms and resort accommodation to name just a few.

We're commercial

With over 90 years of combined experience in the industry, the team at Modular WA has been responsible for delivering some of the largest modular and prefabricated commercial building projects in WA. No matter where your project is in WA, we have the experience and can build cost effective solutions for nearly any market.

Modular WA knows what it takes to deliver projects on time, on budget and to the very highest level of quality. Highly knowledgeable and skilled staff are able to supply a product and level of customer service which is second to none.

Directors Wayne McGrath, Jason Sjoland & Errol Davies



“Delivering cost efficiency to our clients without the sacrifice of quality.”





COMMERCIAL

- Corporate Offices
- Health Care Facilities
- Government Facilities
- Hospitality and Tourism
- Mining and Resources
- Agriculture and Farming
- Recreation and Training

RESIDENTIAL

- Metropolitan and Remote Housing
- Single and Multi-Storey Apartments
- Granny Flats
- Park Homes and Cabins
- Government and Indigenous Housing

EDUCATION

- New Primary/Secondary School Developments
- Classrooms
- Science and Home Economics Buildings
- Day Care Centres
- Sports Facilities
- Administration Buildings

VILLAGES

- Lifestyle Villages
- Tourist and Caravan Parks
- Student Accommodation
- Affordable Housing Developments





We're for WA

Modular WA is all about keeping it real. As a proud locally owned WA Company, we know it's the people that build our communities and enterprises and we're committed to employing those that reside in our great state. With every commercial project we undertake, we employ both locally at our Perth based manufacturing yard (during the construction process) and also in the local community to finish our projects.

We engage and rely on local trades, including earthwork contractors, concrete workers, plumbers and electricians to bring our buildings to life on the ground.



We're for sustainability

Sustainable Design + Construction

Modular WA has an unwavering commitment to quality, from superior materials to meticulous construction methods. It all adds up to the design and construction of industry leading, energy efficient, low maintenance modular buildings.

From cyclones, to heat waves and freezing lows, our modular buildings are built to withstand everything WA throws at them. So if you're living and working in Karratha or Marble Bar, you will keep the heat out while reducing energy consumption. And if you are living and working in Albany or Esperance, you can kick back in warm comfort when the mercury plunges.

Our buildings always achieve a high level of energy efficiency. Whether it's our high quality lightweight external cladding delivering superior ambient temperature control or our formaldehyde free insulation protecting you from health, dust and odour issues, Modular WA has considered every detail.

Our ability to construct a large component of the building "offsite" has a substantial impact on the efficient use of materials and reduces the waste generated during the construction process. This is good for the environment as it dramatically reduces the amount of waste going to landfill. Recycling forms a big part of our commitment to waste reduction with materials such as steel being recovered and recycled.



We're for strength

When you partner with Modular WA, you have peace of mind that your investment is based on a solid foundation of both financial strength and quality control. Modular WA is backed by the Wyllie Group, which allows us to apply all of the resources necessary to produce modular building solutions of any size with complete confidence that the project will be delivered on time.

The reputation of our experienced Modular WA team is undeniably strong, which is no surprise given they have all taken a relentless approach to enforcing exceptional standards of quality control throughout their careers. It's this approach, which has guided the development of Modular WA's own systems and processes, which ensures every project is finished to the very highest guarantee of quality.

We're for safety

Modular WA's Occupational Safety and Health Policy is based on a belief that the well-being of people employed at work, or people affected by our work, is a major cornerstone of the way we do business and must be considered in all aspects of our operations. People are our most important asset, and safety and health in the workplace is everyone's responsibility with every person being treated with equal priority, including members of the public.

Modular WA, led by its senior management strives to achieve an outcome of zero harm in the workplace and will comply with all relevant legislative requirements. We will also train and encourage all workers to strive to achieve our goal of a zero harm workplace.

Modular WA has established an Integrated Safety Management Plan to ensure our occupational health and safety goals and procedures are clearly communicated to all stakeholders and to ensure compliance with all relevant Occupational, Health and Safety legislation. All personnel working on or entering our work sites will undergo a specific induction process to make sure they have the information and training they need to work safely and to encourage others to do the same.

We're for intelligent design

Modular WA has assembled a design team with vast experience in the modular field, having tackled projects from custom residential housing to modular accommodation villages and commercial buildings. Our team values efficient, functional design and we are constantly looking for new, innovative solutions in order to achieve the best possible outcome for our clients.

With a focus on designing high quality buildings without compromising on cost efficiency, the Modular WA team consistently deliver attractive, livable buildings individually tailored to each client, and designed for maximum functionality.

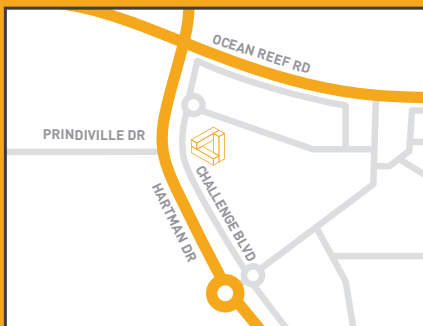


Previous Projects

Modular WA has a capable and highly experienced board of directors and project management team with extensive expertise in delivering modular solutions of any size - from small residential contracts to large scale commercial installations. Some notable recent projects include the Jurien Bay Village, a Multi-Purpose Sports Facility in Yalgoo, Ablution & Kitchen Facilities for South west Resorts, as well as a number of commercial buildings for the Water Corporation.

Wayne McGrath, Jason Sjoland and Errol Davies have worked together for many years and have successfully delivered turnkey modular building projects for clients such as the Housing Authority, BHP Billiton, Rio Tinto and Woodside. Both Errol Davies and Wayne McGrath are registered builders with extensive project management experience.





Commercial Director - Errol Davies

Phone: 08 6454 0919

Toll free: 1800 001 016

errol@modularwa.com.au

31 Challenge Blvd, Wangara WA 6065

PO Box 1786 Wangara Dc 6947

BRN 101630



modularwa

modularwa.com.au